

ELLE
MEDICAL APPAREL



SUMMER 2020 COLLECTION



ELLE

Launched in 1945, ELLE delivered a much-needed jolt of style and joie de vivre to postwar Europe. ELLE quickly became a global brand, synonymous with effortless chic and a French-girl aesthetic.

ELLE Medical brings that aesthetic to the world of health care. We're known for graceful prints, tailored lines, and unique touches like hidden pocket messages and our signature bookmark hangtag.

For summer 2020, we're debuting new prints, new styles, and a fresh new Lilac Sand hue - all in celebration of the ELLE woman, and 75 years of fashion and savoir faire.

CONTENTS

- 4 Simply Polished Collection
- 10 Prints à la Mode
- 13 Continuing Prints
- 14 Size Chart, Garment Fit Guide, Indexes, Color Abbreviations
- 15 Matrix



WHAT'S NEW

Two styles in three classic colors, one color (Lilac Sand), five print tops



Cover: EL620 Top & EL130 Pant in LILS. On left: EL130 Pant in LILS & EL101 Pant in NAV and Rush shoe in IRWT by Infinity.
This page: EL770 Top in NAV; EL620 Top & EL130 Pant in LILS; EL101 Pant in NAV; DRVD Print Top.



Model is wearing EL770 Zip-up Top in NAV. Opposite page: EL101 Pant in NAV and Rush shoe in IRWT by Infinity.

SIMPLY POLISHED

EL770 Zip-up Top

Sizes: XS-3XL

Length: 26"

Fabric: 92 poly/
8 spandex tonal texture



NEW
STYLE

BLK NAV PWT

Contrast DTM Knit
Side Panels:

88 poly/12 spandex knit

Style Features:

- Modern Classic fit
- Welt pockets & hidden cell pocket
- Two-way zipper
- Underarm and back side knit panels
- Half sleeves with vents
- Hidden message: "Tout est possible"
(Anything is possible)

EL915 Knit Tee

Sizes: XS-2XL

Length: 26"

Fabric: 95 poly/
5 spandex knit



BLK WHT

Style Features:

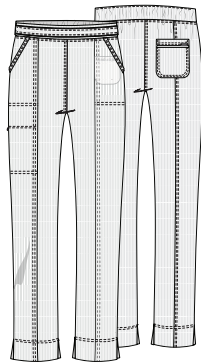
- Modern Classic fit
- Round neck
- Stylized high-low hem

EL101/P Mid Rise Pull-on Ankle Pant

Sizes: XXS-3XL
See p.15 for Petite sizes.

Inseam: 26"

Fabric: 92 poly/
8 spandex tonal texture



NEW
STYLE

BLK NAV

Style Features:

- Modern Classic fit
- Hidden cargo pocket with
invisible zipper
- Front pockets, back pocket
- Tapered leg with 12" opening
- Hidden message: "Sois belle
à ta façon" (Be beautiful in
your own way)





EL620
Mock Wrap Top

Sizes: XXS-5XL

Length: 26"

Fabric: 92 poly/
8 spandex tonal texture

BLK	BUEE	CAR	CIE
GAB	HGY	LILS	NAV
PWT	ROY	RUE	TLB
TRQ	WHT	WIN	

Back Knit Panels:
88 poly/12 spandex knit



Style Features:

- Modern Classic fit
- Front angled pockets & cell pocket
- Back security pocket with zip closure
- Princess seams & bungee loop
- Hidden message: "La vie est belle" (Life is beautiful)



EL300
Warm-up Jacket

Sizes: XXS-5XL

Length: 27"

Fabric: 92 poly/
8 spandex tonal texture

BLK	CAR	CIE	NAV
PWT	ROY	WHT	WIN

Back Knit Panels & Cuffs:
88 poly/12 spandex knit



Style Features:

- Modern Classic fit
- Front angled pockets & cell pocket
- Logo snap-front closure
- Striped necktape & woven label
- Hidden message: "Amour et compassion" (Love and compassion)

This page: EL620 Top & EL130 Pant in LILS; EL300 Jacket in ROY.
Opposite page: EL130 Pant in LILS.



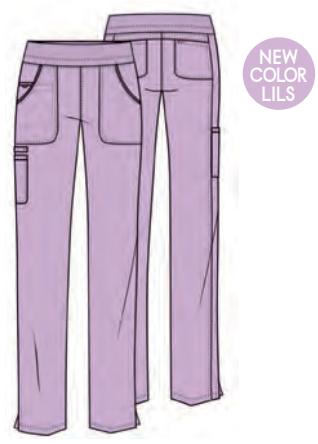
EL130/P/T
Mid Rise Pull-on
Cargo Pant

Sizes: XXS-5XL
See p. 15 for Petite & Tall sizes.

Inseam: 31"

Fabric: 92 poly/
8 spandex tonal texture

Waistband:
88 poly/12 spandex knit



BLK	BUEE	CAR	CIE
GAB	HGY	LILS	NAV
PWT	ROY	RUE	TLB
TRQ	WHT	WIN	

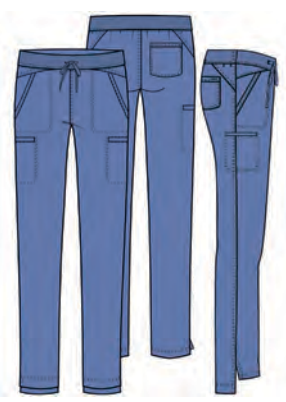
- Style Features:**
- Modern Classic fit
 - Front, cargo, cell & back pockets
 - Knit waistband & back yoke
 - Instrument loop with logo snap
 - Straight leg with 16 1/2" opening
 - Hidden message:
"Joie de vivre" (Joy of life)

EL167/P/T
Natural Rise Pull-on
Drawstring Pant

Sizes: XXS-5XL
See p. 15 for Petite & Tall sizes.

Inseam: 31 1/2"

Fabric: 92 poly/
8 spandex tonal texture



BLK	CAR	CIE	GAB
HGY	NAV	PWT	ROY
RUE	TLB	WHT	WIN

Waistband: 88 poly/
12 spandex knit

- Style Features:**
- Modern Classic fit
 - Front slash pockets with interior pocket, welt cargo pockets and back pocket
 - Straight leg with 14" opening
 - Step hem with vent
 - Hidden message:
"Je crois en...♥" (I believe in...♥)



EL604
V-Neck Top

Sizes: XXS-5XL
Length: 26"

Fabric: 92 poly/
8 spandex tonal texture



Side Panels: 88 poly/
12 spandex knit



Style Features:

- Modern Classic fit
- Front angled pockets & hidden zipper pocket
- Back knit side panels & front vents
- Stylized high-low step hem
- Hidden message: "L'amour toujours" (Love always)



EL695
V-Neck Top

Sizes: XS-3XL
Length: 26"

Fabric: 92 poly/
8 spandex tonal texture



Style Features:

- Modern Classic fit
- Twist V-neck
- Knit side panels & sleeve inset
- Front angled pockets & cell pocket
- Hidden message: "Belle journée pour être heureux" (It's a beautiful day to be happy)

Featured on this page: EL604 Top & EL130 Pant in NAV; EL695 Top in NAV.
Opposite page: EL650 Top & EL150 Pant in RED.



EL650 V-Neck Top

Sizes: XXS-3XL

Length: 26"

Fabric: 92 poly/
8 spandex tonal texture



BLK PWT RED

Back Knit Side Panels:
88 poly/12 spandex knit

Style Features:

- Modern Classic fit
- Front pockets with piping detail
- Left cell pocket & right inside pocket
- Striped rib knit at neck and pocket
- Hidden message: "À votre santé"
(Cheers / To your health)

EL310 Bomber Jacket

Sizes: XXS-3XL

Length: 26"

Fabric: 92 poly/
8 spandex tonal texture



BLK PWT RED

Waistband & Cuffs:
88 poly/12 spandex knit

Style Features:

- Modern Classic fit
- Front pockets & inside pockets
- Front zipper with silver logo pull
- Striped rib knit at neck and pockets
- Hidden message: "Merci pour...♥"
(Thank you for...♥)

EL150/P Drawstring Cargo Pant

Sizes: XXS-3XL
See p.15 for Petite sizes.

Inseam: 30 1/2"

Fabric: 92 poly/
8 spandex tonal texture

**Back Waistband
& Yoke:**
88 poly/12 spandex knit



BLK PWT RED

Style Features:

- Modern Classic fit
- Striped rib knit on front pockets
- Welt cargo pockets & inside pockets
- Inside drawstring
- Tapered leg with 16" opening
- Hidden message: "De tout mon
coeur" (With all my heart)



PRINTS À LA MODE

ABUH EL763

Sizes: XS-3XL

Length: 26"

Fabric: 91 poly/
9 spandex tonal texture



Coordinating Colors:



A Brush Of Color



CYBF EL602

Sizes: XXS-5XL

Length: 26"

Fabric: 91 poly/
9 spandex tonal texture



Coordinating Colors:



Cherry Blossom Floral



DRVD EL830

Sizes: XS-3XL

Length: 26"

Fabric: 95 poly/
5 spandex poplin



Coordinating Colors:



Decorative Daisies



Featured on this page: CYBF Print Top, EL130 Pant in WIN.
Opposite page: ABUH Print Top, EL130 Pant in LILS.



FEFA
EL602

Sizes: XS-3XL

Length: 26"

Fabric: 91 poly/
9 spandex tonal texture



Coordinating Colors:

BLK NAV RUE TRQ

WHT

Feline Fancy



BIGL
EL760

Sizes: XXS-5XL

Length: 26"

Fabric: 91 poly/
9 spandex tonal texture



Coordinating Colors:

BLK PWT RUE TRQ

WHT

Big Bloom



CONTINUING PRINTS

ABLO
EL715

Sizes: XS-3XL
Length: 26"
Fabric: 91poly/
9 spandex tonal texture



Coordinating Colors:



All A Bloom



FLRR
EL760

Sizes: XS-3XL
Length: 26"
Fabric: 91poly/
9 spandex tonal texture



Coordinating Colors:



Floral Sea



LVAM
EL615

Sizes: XXS-3XL
Length: 26"
Fabric: 91poly/
9 spandex tonal texture



Coordinating Colors:



Love Amour



JAE0
EL602

Sizes: XXS-3XL
Length: 26"
Fabric: 91poly/
9 spandex tonal texture



Coordinating Colors:



J'Adore Geos



HANO
EL667

Sizes: XS-3XL
Length: 26"
Fabric: 91poly/
9 spandex tonal texture



Coordinating Colors:



Hand Painted Posies



SIZE CHART

Use this chart to determine your size. If one of your measurements is borderline between two sizes, order the smaller size for a tighter fit or the larger size for a looser fit. If your measurements for hips and waist correspond to two different suggested sizes, order the one indicated by your hip measurement. All measurements are in inches.

	Size	Bust	Waist	Hips
XXS	0	31-32	23-24	33-34
XS	2-4	33-34	25-26	35-36
S	6-8	35-36	27-28	37-38
M	10-12	37-39	29-31	39-41
L	14-16	40-43	32-35	42-45
XL	18-20	44-47	36-39	46-49
2XL	22-24	48-51	40-43	50-53
3XL	26-28	52-55	44-47	54-57
4XL	30-32	56-59	48-51	58-61
5XL	34-36	60-63	52-55	62-65

STYLE INDEX

EL101/P	SOLID	2,3,4,5
EL130/P/T	SOLID.....	2,3,6,7,8
EL150/P	SOLID.....	9
EL167/P/T	SOLID.....	7
EL300	SOLID.....	6
EL310	SOLID.....	9
EL602	CYBF.....	11
EL602	FEFA.....	12
EL602	JAE0.....	13
EL604	SOLID.....	8
EL615	LVAM.....	13
EL620	SOLID.....	3,6
EL650	SOLID.....	9
EL667	HANO.....	13
EL695	SOLID.....	8
EL715	ABLO.....	13
EL760	BIGL.....	12
EL760	FLRR.....	13
EL763	ABUH.....	10,11
EL770	SOLID	2,4,5
EL830	DRVD.....	11
EL915	SOLID.....	5

New styles indicated in **bold**.

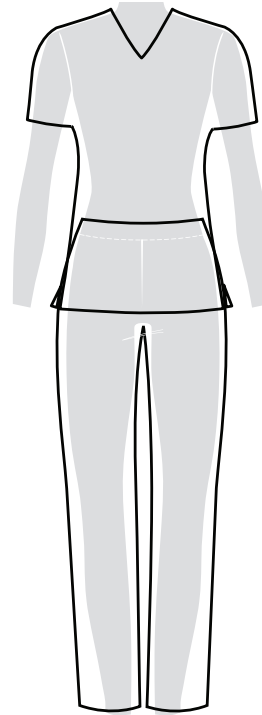
COLOR ABBREVIATIONS

New colors indicated in **bold**.

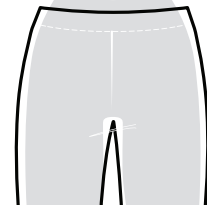
BLK	BUJE	CAR	CIE	GAB	HGY	LILS	NAV
Black	Bleu	Caribbean Blue	Ciel	Galaxy Blue	Heather Grey	Lilac Sand	Navy
PWT	RED	ROY	RUE	TLB	TRQ	WHT	WIN
Pewter	Red	Royal	Rouge	Teal Blue	Turquoise	White	Wine

GARMENT FIT GUIDE

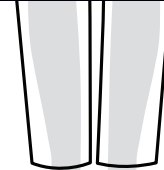
Modern Classic Fit



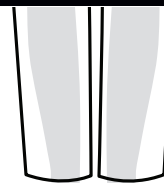
Pant Waist Fit: Mid Rise



Pant Leg Fit: Tapered



Pant Leg Fit: Straight



PRINT INDEX

ABLO	ALL A BLOOM.....	13
ABUH	A BRUSH OF COLOR	10,11
BIGL	BIG BLOOM	12
CYBF	CHERRY BLOSSOM FLORAL ..	11
DRVD	DECORATIVE DAISIES	3,11
FEFA	FELINE FANCY	12
FLRR	FLORAL SEA.....	13
HANO	HAND PAINTED POSIES.....	13
JAE0	J'ADORE GEOS.....	13
LVAM	LOVE AMOUR.....	13

New styles indicated in **bold**.

MATRIX



EL130/P/T
Pull-on Cargo Pant
XXS-5XL (31")
[P] XXS-3XL (28½")
[T] XS-2XL (34")



EL620
Mock Wrap Top
XXS-5XL (26")



EL300
Warm-up Jacket
XXS-5XL (27")



EL650
V-Neck Top
XXS-3XL (26")



EL150/P
Drawstring
Cargo Pant
XXS-3XL (30½")
[P] XXS-2XL (28")



EL915
Knit Tee
XS-2XL (26")



EL310
Bomber Jacket
XXS-3XL (26")

Black (BLK)				F		F		F	
Navy (NAV)				not available		not available		not available	
Pewter (PWT)				F		F		not available	F
Royal (ROY)				not available		not available		not available	not available
White (WHT)	FP/FT			not available		not available			not available
Wine (WIN)	FP/FT			not available		not available		not available	not available
Ciel (CIE)	FP/FT		F	not available		not available		not available	not available
Red (RED)	not available	not available	not available	F		F		not available	F
Caribbean Blue (CAR)	FP/FT		F	not available		not available		not available	not available
Rouge (RUE)	F	F	not available	not available		not available		not available	not available
Teal Blue (TLB)			not available	not available		not available		not available	not available
Turquoise (TRQ)			not available	not available		not available		not available	not available
Galaxy Blue (GAB)			not available	not available		not available		not available	not available
Heather Grey (HGY)			not available	not available		not available		not available	not available
Bleu (BUEE)	F XS-3XL, [P] XS-2XL, No Tall	F XS-3XL	not available	not available		not available		not available	not available
NEW Lilac Sand (LILS)	F XS-3XL, [P] XS-2XL, No Tall	F XS-3XL	not available	not available		not available		not available	not available



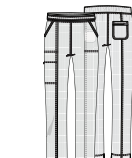
EL167/P/T
Pull-on
Drawstring Pant
XXS-5XL (31½")
[P] XXS-3XL (29")
[T] XS-2XL (34½")



EL604
V-Neck Top
XXS-5XL (26")



EL695
V-Neck Top
XS-3XL (26")



NEW STYLE
EL101/P
Mid Rise
Pull-on Pant
XXS-3XL (26")
[P] XS-2XL (23½")



NEW STYLE
EL770
Zip-up Top
XS-3XL (26")

Black (BLK)			F	F	F
Navy (NAV)			F	F	F
Pewter (PWT)			F	not available	F
Royal (ROY)			not available	not available	not available
White (WHT)			not available	not available	not available
Wine (WIN)			not available	not available	not available
Ciel (CIE)			not available	not available	not available
Caribbean Blue (CAR)			not available	not available	not available
Rouge (RUE)			not available	not available	not available
Teal Blue (TLB)			not available	not available	not available
Galaxy Blue (GAB)			not available	not available	not available
Heather Grey (HGY)			not available	not available	not available

All styles and colors featured are listed in order of popularity and are REORDERABLE, unless otherwise indicated. Center back lengths and inseams are listed in parentheses.

F fashion color (available while supplies last)

FP/FT fashion color Petite and Tall sizes (available while supplies last)